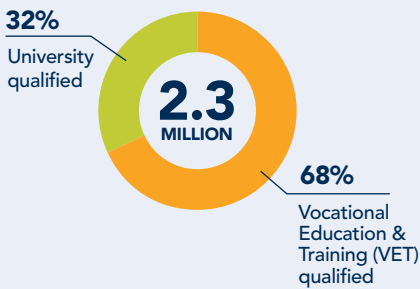


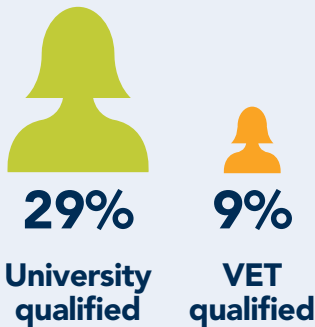
KEY FACTS

TOTAL STEM WORKFORCE

STEM workforce



16% of STEM qualified people are female



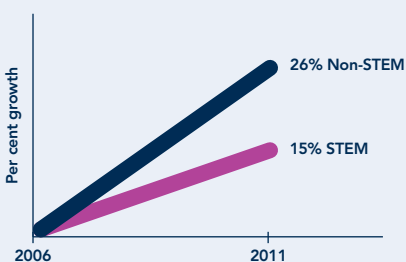
Unemployment rate

STEM = 3.7%

Non-STEM = 4.1%

Growth of STEM vs non-STEM qualified population

Between 2006 and 2011:



STEM UNIVERSITY GRADUATES

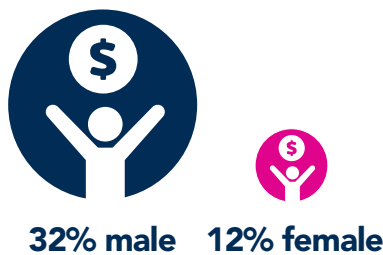
Industries and occupations

STEM graduates work across the economy in a wide variety of industries and largely as professionals (55%) and managers (18%).

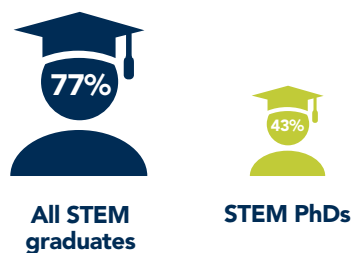
Top six industries (65% of STEM graduates)



% of STEM graduates earning in the top income bracket (\$104 000 or above)

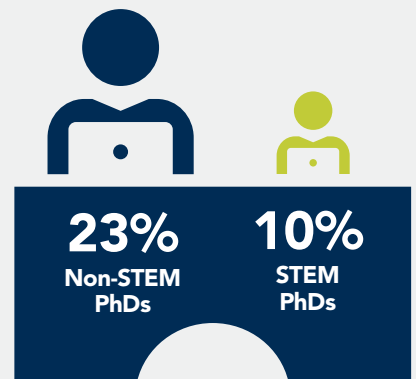


% of employed STEM graduates in the private sector



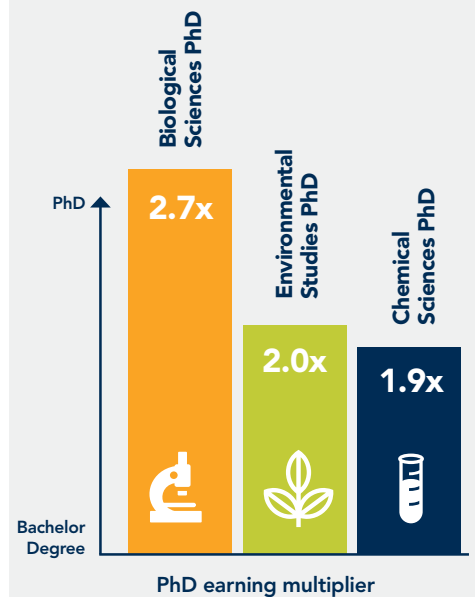
STEM PhD GRADUATES

Business ownership



10% of STEM PhDs owned a business compared to 23% of non-STEM PhDs.

A PhD can provide an earning premium



In every STEM field, higher proportions of PhDs earned in the top income bracket compared to bachelor graduates.